

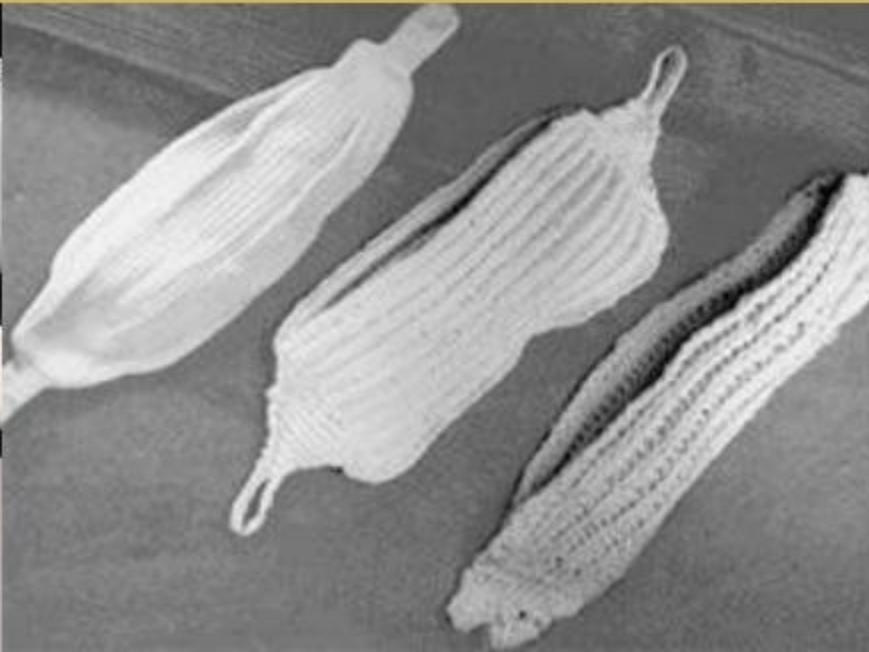
**SKY
LINE** SL-6

**Smart Cloud-Sense
Sanitary Napkin**

*One Touch Pad
All-Day Comfort*



- 1920 s** The first disposable sanitary napkin was introduced, requiring a menstrual belt for securing.
- 1930 s** Tampons with applicators were developed.
- 1970 s** Self-adhesive backing revolutionized sanitary napkins.
- 1989-1990 s** Ultra-thin designs and winged structures emerged.
- 1990-2020 s** Focus shifted to “diversification” and “material advancements.”





Olylifeskyline Smart Cloud-Sense Sanitary Napkin

What makes it different?

True intelligence

It's not about connecting the sanitary napkin to an electronic device.

It's about materials that understand your body.

Menstrual discomfort is often unspoken—

Your body expresses discomfort through temperature ...

Your blood conveys stagnation through ion concentration ...

This sanitary napkin, equipped with a physical sensing smart chip,
is the first care technology to decode your body's signals.

Skyline ' chip

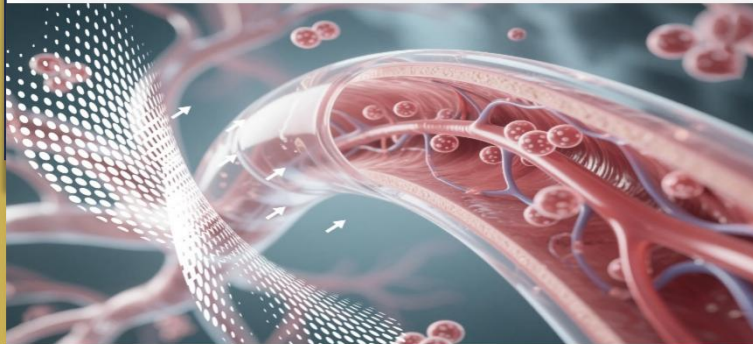
**Using fixed physics laws
to handle changing body needs**

The 3 Substances in the Skyline Chip that Enable "Physical Intelligence"

Magnetic Induction Chip

Innovative Chip with **Magnetic Induction Technology** Utilizing a nano-dispersion process, cutting-edge rare-earth permanent magnets are processed into submicron magnetic units (0.1-10 μm). These units are directionally arranged within a carrier to form an ordered magnetic matrix.

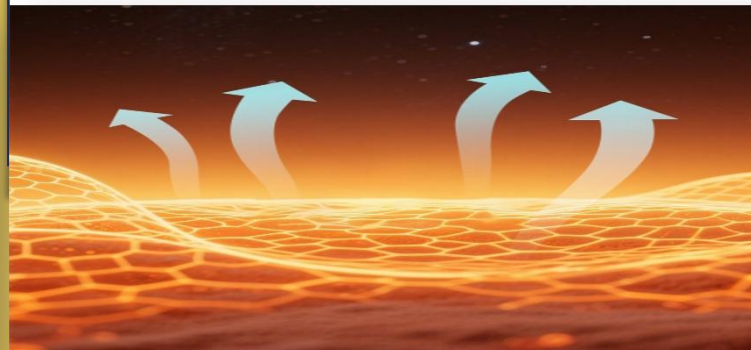
This matrix can stimulate localized blood circulation in the body, accelerate blood flow, and provide more oxygen and nutrients to tissues and cells, thereby improving local metabolism and alleviating conditions such as localized blood stagnation during menstruation.



Crystalline Thermal Energy

Far-infrared ceramic crystal powder, sintered at 1200°C to form a spinel structure, vibrates in an orderly manner when activated by body temperature, precisely releasing 4–14 μm far-infrared rays. These light waves penetrate deeply, resonating with the body's natural thermal frequency to enhance self-regulating thermal circulation.

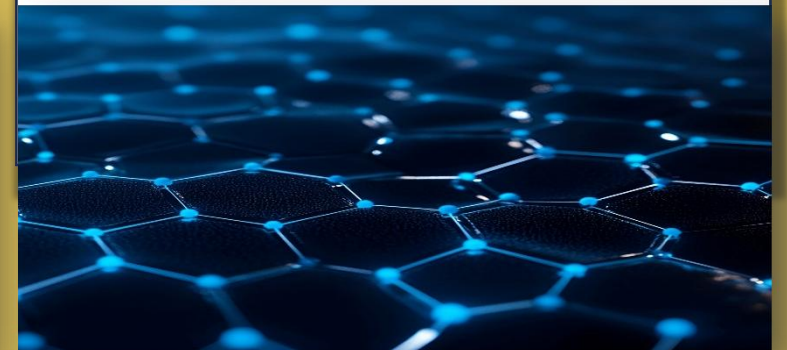
Your body temperature is the energy source



Instant warmth penetration |
Microcirculation thermal activation |
Self-sustaining constant temperature system

Graphene 3D Framework

Through an exclusive flow-casting film-forming process, graphene slurry is bonded at the molecular level to non-woven fabric fibers, forming a **three-dimensional nano-network** through precisely controlled temperature drying. Its superconducting layers lock far-infrared ceramic powder and magnetic units through quantum adsorption effects (π - π conjugation / van der Waals forces).



Zero-clustering dispersion | Multifunctional synergistic fixation | Long-lasting activity

Magnetic Material

Hemodynamics

Accelerates prostaglandin clearance.

Cellular Energy Field

Enhances endometrial repair and cellular energy

Neural Regulation

Reduces pain nerve sensitivity.

Ceramic Powder

Thermal Penetration Effect

Relieves spasmodic uterine contractions

Blood Flow Resonance Effect

Accelerates the clearance of metabolic byproducts



Graphene

Quantum-Level Antibacterial Protection

人體靜電誘導, 抗菌力提升

Supercritical Fluid Management System

石墨烯的“虹吸-固著”系統會因液體濃度升高

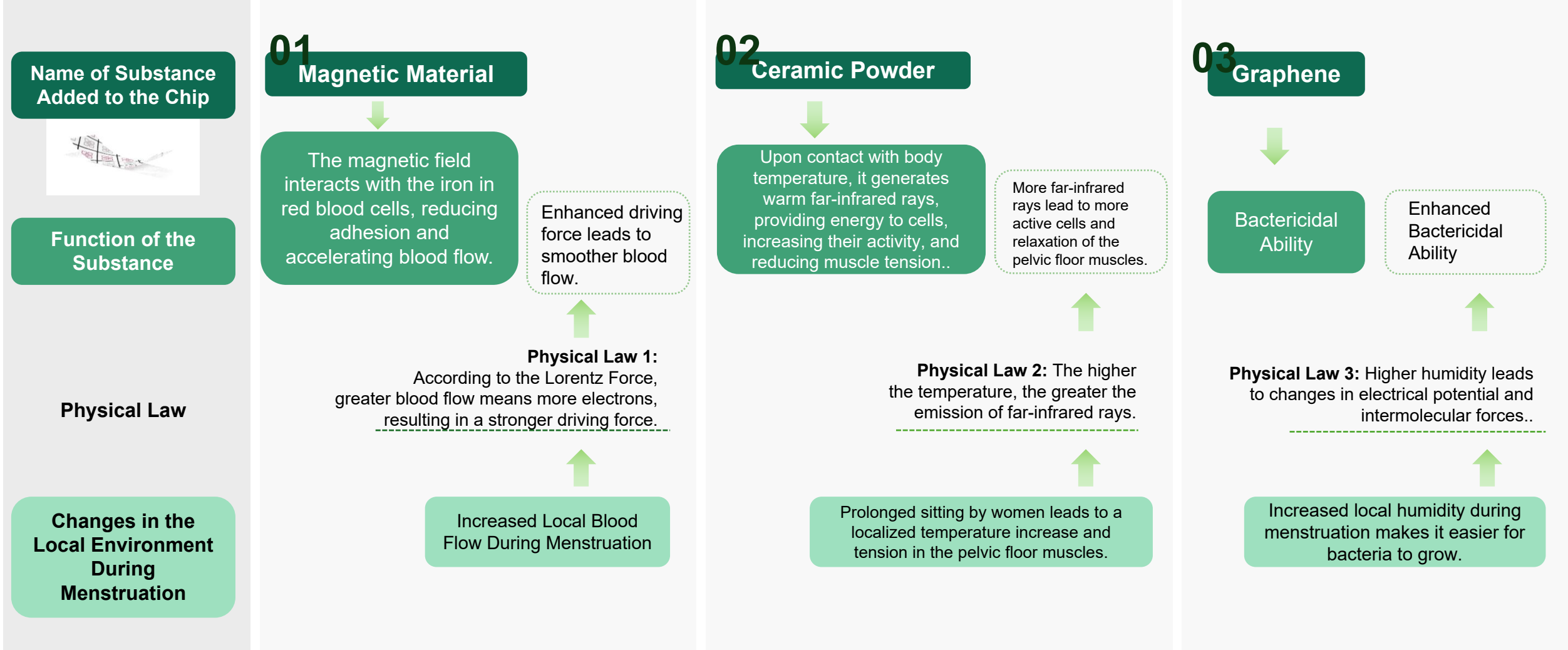
Bioresonance Far-Infrared Therapy

發射遠紅外線加速血流



Let Body Signals Guide Technology, Redefining Menstrual Care

Increased local blood flow, humidity, and temperature enhance the chip's effectiveness.



While traditional products focus on passive absorption, our chip understands the body's language.



What is the purpose of traditional sanitary napkins?

Passively absorb liquid to help women manage their period.

SKY LINE

What a Sanitary Napkin Should Offer

Skyline has it all

—and does it better.



Safety Defense: Oversized absorbent core with superior moisture-locking capacity.

Instant absorption and downward seepage keep the surface dry, preventing backflow even during prolonged sitting.



Ultra-Thin Core Design

The absorbent core is approximately 0.03 inches thick, thin yet highly absorbent, with 3-second instant absorption, zero pressure, and an imperceptible feel.



No recycled cotton
No wood pulp
Safe and eco-friendly
Non-toxic, non-irritating, and pollution-free

TEST REPORT

No. : GZMR250702313501

Date : Aug 12, 2025

Page: 3 of 3

1. Test Item: Bibulous Multiple

Sample Description: A-Sanitary towels

Test Method: GB/T 8939-2018 Section 4.4

Test Condition:

Weigh with an electronic balance

Test Solution: Deionized water

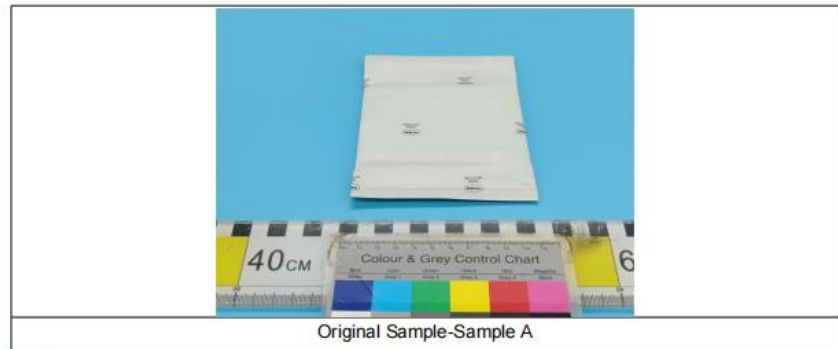
Lab Environmental Condition: (23 ± 2) °C, (50 ± 5) %RH

Test Result:

Sample A

Test Item	Test Result	Requirement	Conclusion
Bibulous Multiple	58.3 times	≥ 7.0 times	Pass

Test Photo:



Appendix information:

*Unless otherwise stated, the decision rule for conformity reporting is based on Binary Statement for Simple Acceptance Rule (w=0) stated in ILAC-G8:09/2019.

*The test report shall only be used for client scientific research, teaching, internal quality control, product research and development, etc. and just for client internal reference.

***** End of report*****

Test Item	Test Result	Requirement	Conclusion
Bibulous Multiple	58.3 times	≥ 7.0 times	Pass

Water absorption capacity exceeds **50** times



The Cause of Side Leakage

The front is prone to stretching or deformation due to body position or underwear width.



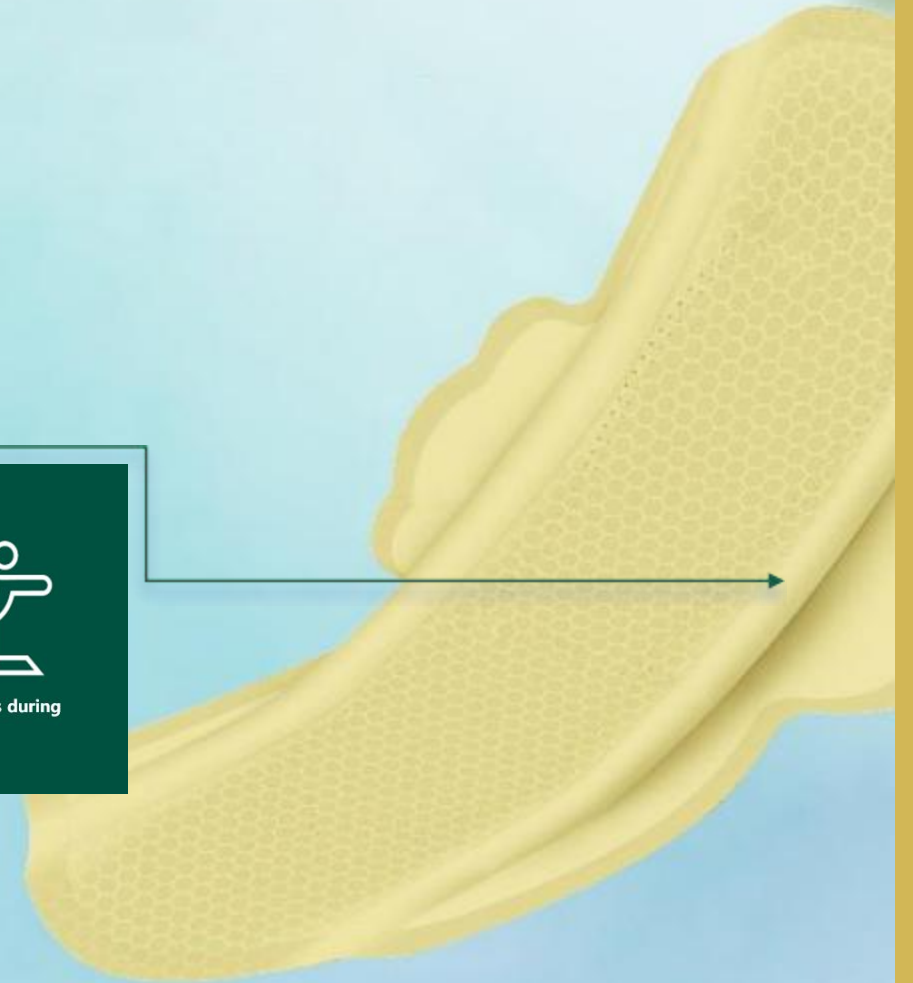
Prevent Side Leakage, Reduce Friction

Side Leakage Protection Patent

Three-dimensional suspension and dynamic fit ensure comprehensive leak protection.

Patented Suspension Technology: Water-repellent side guards fold inward, encasing the edges of the absorbent layer. The edges bond with the inner side of the seventh layer, forming a suspended edge that allows the absorbent layer to float freely, achieving dynamic fit. Whether sitting for long periods at work, engaging in vigorous exercise, or turning over during sleep, side leakage is no concern.

The suspended three-dimensional structure optimizes the contact surface between the napkin and the vulva, reducing discomfort from friction at the thigh roots, offering greater softness and comfort.



Antibacterial Odor Neutralization — Your Invisible Cleanliness Guardian, Focused on Detailed Protection

Auxiliary technology layer enhances the experience by complementing the core energy system.

Tea Polyphenols

A plant-based molecular scalpel, extracted active polyphenols from tea instantly puncture microbial lipid membranes, disrupting bacterial structures.



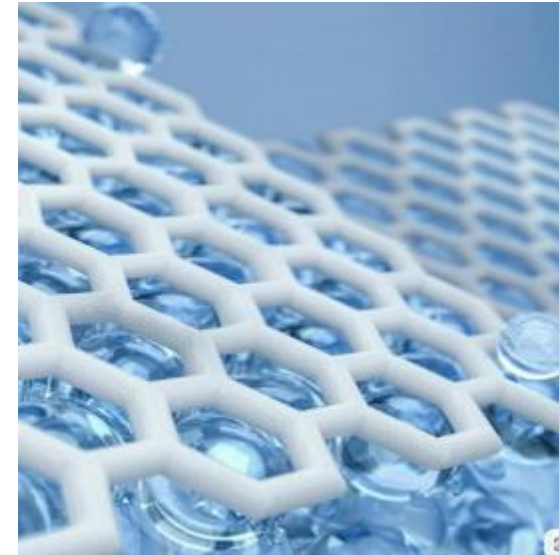
Negative Ions

An odor-deconstructing field, released negative ions effectively break down the metallic smell of menstrual blood and other secretions.



Silver Ions

An ion interception network, 10nm silver ions target and invade bacterial cells, locking onto DNA replication enzymes to block the regeneration chain of resistant bacteria.



Skyline Antibacterial Test Result: **>99%** Comprehensive Antibacterial Rate

Test Report

ASH25-0074788-01

Date: 2025-09-12

Sample Description:

Sample No.	SGS Sample ID	Description
1	ASH25-0074788-0001	sample in bag

Test Result(s):

Test Requested: Selected test(s) as requested by applicant:Antimicrobial activity test

Test Method: WS/T 650-2019 Evaluating Method for Efficacy of Antibacterial and Bacteriostasis 5.1.3
Bacteriostatic test of Carrier

ASH25-0074788-0001

Test organism(s) Candida albicans ATCC 10231

	Repeat 1	Repeat 2	Repeat 3
Concentration of fungal suspension(CFU/mL)	1.6×10 ⁵	1.4×10 ⁵	1.4×10 ⁵
Fungi from positive control sample (CFU/piece)	1.2×10 ⁴	1.2×10 ⁴	1.2×10 ⁴
Fungi from sample (CFU/piece)	<5	<5	<5
Bacteriostatic rate (%)	>99	>99	>99

Test organism(s) Escherichia coli 8099

	Repeat 1	Repeat 2	Repeat 3
Concentration of Bacteria suspension(CFU/mL)	3.8×10 ⁵	4.1×10 ⁵	4.0×10 ⁵
Bacteria from positive control sample (CFU/piece)	1.7×10 ⁴	2.1×10 ⁴	2.0×10 ⁴
Bacteria from sample (CFU/piece)	<5	<5	<5
Bacteriostatic rate (%)	>99	>99	>99

Test organism(s) Staphylococcus aureus ATCC 6538

	Repeat 1	Repeat 2	Repeat 3
Concentration of bacterial suspension(CFU/mL)	2.8×10 ⁵	2.6×10 ⁵	2.7×10 ⁵
Bacteria from positive control sample (CFU/piece)	1.3×10 ⁴	1.3×10 ⁴	1.3×10 ⁴
Bacteria from sample (CFU/piece)	<5	<5	<5
Bacteriostatic rate (%)	>99	>99	>99

Notes:

According to the client's request, the control sample was standard cotton fabric, provided by SGS lab.
Test Time:6h

SGS-CSTC Standards Technical Services (Shanghai) Co., Ltd.
Page 2 of 3



Unless otherwise agreed in writing, this document is issued by the Company subject to its General Conditions of Service printed overleaf, available on request or accessible at <http://www.sgs.com/China/sgs/conditions>. Attention is drawn to the limitation of liability, indemnification and jurisdiction issues defined therein. Any holder of this document is advised that information contained herein reflects the Company's findings at the time of its intervention only and within the limits of Client's instructions, if any. The Company's sole responsibility is to its Client and this document does not constitute parties to a transaction from oversteering all their rights and obligations under the transaction documents. This document cannot be reproduced except in full, without prior written approval of the Company. Any unauthorized alteration, forgery or falsification of the content or appearance of this document is unlawful and offenders may be prosecuted to the fullest extent of the law. Licensee otherwise stated the results shown in this test report refer only to the sample(s) tested. Attention: To check the authenticity of testing/inspection report & certificate, please contact us at telephone: (86-755) 8337 1443, or email: CN_Standtech@sgs.com

3rd Building, No.893, Yishan Road, Xuhui District, Shanghai, China 200233 1 (86-021) 6964 5376 www.sgs.com.cn
中国·上海·徐汇区宜山路893号3楼 邮编: 200233 1 (86-021) 6964 5376 sgs.china@sgs.com

Member of the SGS Group (SGS SA)

ASH25-0074788-0001

Test organism(s) Candida albicans ATCC 10231

	Repeat 1	Repeat 2	Repeat 3
Concentration of fungal suspension(CFU/mL)	1.6×10 ⁵	1.4×10 ⁵	1.4×10 ⁵
Fungi from positive control sample (CFU/piece)	1.2×10 ⁴	1.2×10 ⁴	1.2×10 ⁴
Fungi from sample (CFU/piece)	<5	<5	<5
Bacteriostatic rate (%)	>99	>99	>99

Test organism(s) Escherichia coli 8099

	Repeat 1	Repeat 2	Repeat 3
Concentration of Bacteria suspension(CFU/mL)	3.8×10 ⁵	4.1×10 ⁵	4.0×10 ⁵
Bacteria from positive control sample (CFU/piece)	1.7×10 ⁴	2.1×10 ⁴	2.0×10 ⁴
Bacteria from sample (CFU/piece)	<5	<5	<5
Bacteriostatic rate (%)	>99	>99	>99

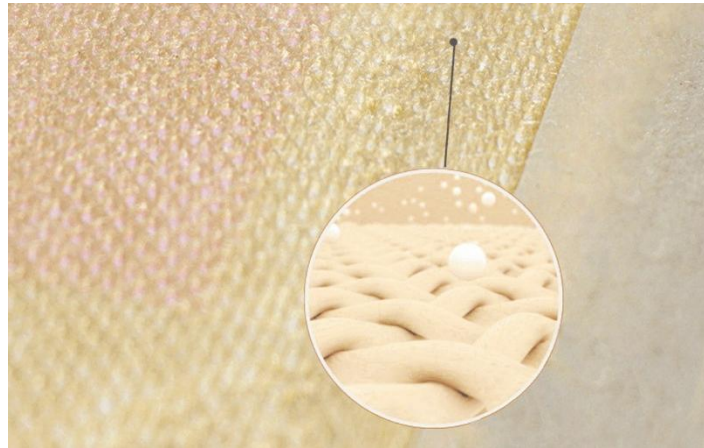
Test organism(s) Staphylococcus aureus ATCC 6538

	Repeat 1	Repeat 2	Repeat 3
Concentration of bacterial suspension(CFU/mL)	2.8×10 ⁵	2.6×10 ⁵	2.7×10 ⁵
Bacteria from positive control sample (CFU/piece)	1.3×10 ⁴	1.3×10 ⁴	1.3×10 ⁴
Bacteria from sample (CFU/piece)	<5	<5	<5
Bacteriostatic rate (%)	>99	>99	>99

Non-Stuffy, Non-Sticky Comfort

Natural Antibacterial Bamboo Fiber Surface Layer

Micro-porous Breathable Bottom Film



Selected Natural Bamboo Fiber

The natural bamboo fiber surface layer, made from premium raw bamboo, is healthy and contains bamboo quinone for antibacterial and odor-neutralizing effects. It feels soft and skin-friendly, with moisture-absorbing, breathable, and eco-friendly properties.

Skyline Base Film

The Skyline base film features countless microporous breathable holes, offering excellent air permeability. This allows air to circulate at the bottom of the sanitary napkin, helping to maintain dryness, reduce stuffiness and moisture



No Deformation, No Shifting, Easy to Apply and Remove

Taking natural purity to the extreme

Eco-friendly adhesive

Using food-grade glue, free from fluorescent whitening agents, ensuring safety, health, and environmental friendliness.

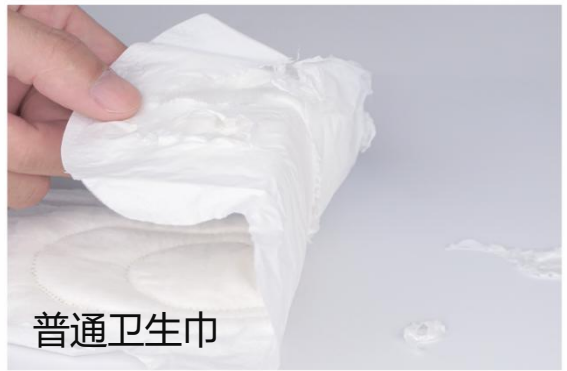
Zero synthetic fibers Zero fluorescent agents Zero pollution



Skyline Sanitary Napkin
Sticks firmly with one application, removes cleanly with one pull.

工业胶

Industrial glue is overly sticky, prone to tearing, and leaves residue on undergarments



普通卫生巾

360 ° Fully Sealed Packaging to Prevent Contamination



Standard Single-Piece Packaging

Gaps allow foreign particles to enter, causing contamination.



Skyline Single-Piece Packaging

Each piece is wrapped in 360° Fully sealed packaging. Tightly sealed to prevent moisture, bacteria, and mold.



Target Users



Postpartum women



Women with
gynecological inflammation



Physically active people



People with bleeding
hemorrhoids



People with intimate
itching



People with urinary
incontinence

Skyline Completes US FDA Registration

U.S. FOOD & DRUG ADMINISTRATION

Follow FDA | En Español

SEARCH

Home | Food | Drugs | Medical Devices | Radiation-Emitting Products | Vaccines, Blood & Biologics | Animal & Veterinary | Cosmetics | Tobacco Products

Establishment Registration & Device Listing

FDA Home | Medical Devices | Databases

1 result found for Establishment Registration or Business Trade Name : *olylife* [New Search](#)

Establishment Name	Registration Number	Current Registration Yr
OLYLIFE INTERNATIONAL SDN BHD MALAYSIA	3027436335	2025
Massager, Therapeutic, Electric - OLYLIFE THz Tera-P90+, Model: P90+		Manufacturer
Pad, Menstrual, Unscented - Floating Natural Bamboo Fiber Sanitary Pads – Gift Set SL-6		Manufacturer, Repackager/Relabeler

Can't find what you're looking for? [Try a new search](#)

Page Last Updated: 09/08/2025
Note: If you need help accessing information in different file formats, see [Instructions for Downloading Viewers and Players](#).
Language Assistance Available: [Español](#) | [繁體中文](#) | [Tiếng Việt](#) | [한국어](#) | [Tagalog](#) | [Русский](#) | [العربية](#) | [Kreyòl Ayisyen](#) | [Français](#) | [Polski](#) | [Português](#) | [Italiano](#) | [Deutsch](#) | [日本語](#) | [فارسی](#) | [English](#)

Accessibility | Contact FDA | Careers | FDA Basics | FOIA | No FEAR Act | Nondiscrimination | Website Policies / Privacy

U.S. FOOD & DRUG ADMINISTRATION

Follow FDA | En Español

SEARCH

Home | Food | Drugs | Medical Devices | Radiation-Emitting Products | Vaccines, Blood & Biologics | Animal & Veterinary | Cosmetics | Tobacco Products

Establishment Registration & Device Listing

FDA Home | Medical Devices | Databases

[New Search](#) [Back To Search Results](#)

Proprietary Name: Floating Natural Bamboo Fiber Sanitary Pads – Gift Set SL-6

Classification Name: PAD, MENSTRUAL, UNSCENTED

Product Code: [HHD](#)

Device Class: 1

Regulation Number: [884.5435](#)

Medical Specialty: Obstetrics/Gynecology

Registered Establishment Name: [OLYLIFE INTERNATIONAL SDN BHD](#)

Registered Establishment Number: 3027436335

Owner/Operator: [OLYLIFE INTERNATIONAL SDN BHD](#)

Owner/Operator Number: 10088116

Establishment Operations: Manufacturer; Repackager/Relabeler

Page Last Updated: 09/08/2025
Note: If you need help accessing information in different file formats, see [Instructions for Downloading Viewers and Players](#).
Language Assistance Available: [Español](#) | [繁體中文](#) | [Tiếng Việt](#) | [한국어](#) | [Tagalog](#) | [Русский](#) | [العربية](#) | [Kreyòl Ayisyen](#) | [Français](#) | [Polski](#) | [Português](#) | [Italiano](#) | [Deutsch](#) | [日本語](#) | [فارسی](#) | [English](#)

Individual differences in menstrual cycles should not be overlooked by standardized products. How can a single sanitary napkin truly adapt to countless variations?

The answer lies in — **harnessing the power of physical principles!**

OlyLife Skyline Smart Cloud-Sense Sanitary Napkin ensures each napkin is tailored to you, moving beyond passive absorption to active adaptation and dynamic regulation. It senses changes in your body temperature, flow, and condition, responding precisely to provide personalized protection. This is more than just a sanitary napkin—it understands your needs and provides a customized comfort solution designed specifically for you.

*One Touch Pad
All-Day Comfort*





*One Touch Pad
All-Day Comfort*

**SKY
LINE**

Smart Cloud - Sense

Sanitary Napkin

Using fixed physics laws
to handle changing body needs